

See all sides.

Proactively manage
your company's profile.

CORPORATIONS
INVESTOR RELATIONS

Bloomberg

Contents

- [03](#) Introducing Bloomberg for investor relations →
- [03](#) Providing information when you need it most →
- [04](#) See where your company stands →
- [05](#) Stay on top of current events →
- [06](#) Target & understand investors →
- [08](#) Stay ahead of analysts →
- [09](#) Gain industry & competitive intelligence →
- [11](#) Monitor markets →
- [13](#) Monitor news →
- [14](#) Stay connected →
- [15](#) Information on the go →

Change the way you manage investor relations.

Share price volatility, rapidly evolving financial markets, new governance requirements and an ever-more-intense media landscape all contribute to making this a turbulent time for Investor Relations officers. The Bloomberg Terminal® helps you stay ahead of analysts, investors and the media, keep your firm's executives informed and proactively manage your company's message.

Introducing Bloomberg for investor relations.

Bloomberg understands the challenges that keep you up at night

You are your firm's front-line ambassador – Bloomberg provides you with an in-depth understanding of all of today's complex and volatile issues and keeps you on top of the vast amounts of news, market data and research that they generate. We arm you with detailed analyst, investor and capital structure information, earnings and estimates data, competitive intelligence, market-moving news and research.

The Bloomberg Terminal also integrates market data with news and financial analysis so you're on top of market-moving events as they occur and in position to take action at a moment's notice. Create a customized workspace to track the information important to you with Bloomberg Launchpad. Download real-time and historical data to Microsoft Excel® to create custom analyses and reports. Exchange ideas with colleagues, analysts and investors over Bloomberg's market-standard communication network. And, Bloomberg's world-class customer service team goes beyond service support to train you on how to fully leverage our cutting-edge technology to optimize your workflow.

Experience the power of Bloomberg anytime and anywhere on your smart phone or tablet. Access the same information you have in your office no matter what time it is or where you are. In addition, Bloomberg Anywhere® provides you with access to the Bloomberg Terminal from any Internet-ready PC anywhere in the world.

Stay ahead of analysts & investors to proactively manage your company's overall message.

Providing information when you need it most.

Target & understand investors

Access and analyze complete shareholder data on your firm and competitors, including historical data to track buying and selling activity. Target investors by type, metro area and more. Portfolio analytics on fund managers offer a wealth of data on your current and potential investors, from basic contact information to unique insights into their investment strategies. With Bloomberg, you'll have an unparalleled source of bondholder data at your fingertips.

Stay ahead of analysts

A single, integrated platform provides complete analyst recommendations, research and consensus estimates all in one easy-to-use platform. All of this data and information is available historically as well for deeper analysis. Whether it is an unexpected note, an earnings release or the latest research report, everything comes across your screen in real time, so you can be proactive.

Gather competitive intelligence

Bloomberg helps you gain greater insight about your industry, company and competitors from the same financial perspective as that of buy- and sell-side analysts.

With the Bloomberg Terminal, you have the data and tools to analyze, identify and evaluate competitors, preparing you for questions about company comparisons, including fundamentals, financial ratios and much more.

Interactive graphs enable you to chart your stock, capital structure, fundamental data and corporate actions to help you understand what's driving your firm's value as well as that of your competitors and the industry as a whole.

See where your company stands.

Track earnings & industry events

Bloomberg allows you to better manage the earnings season and stay on top of critical information. Keep updated in real time with the guidance calls and industry conferences most crucial to your business. Bloomberg tracks more than 100,000 events and transcribes more than 30,000 conference calls annually.

Manage news flow & social media

Never miss an important story about your company or industry with innovative tools that help you stay on top of news and research from the thousands of sources available through Bloomberg. Create custom news panels with real-time audio and visual alerts – when something happens, you’ll know about it. You also can capitalize on our proprietary social media monitoring and analytics for your firm and industry.

Experience the power of Bloomberg anytime & anywhere on your mobile device.

Gain insight into your industry and how the investment community views your company. Quickly access estimates, ratings, news and information about your company and peers, all from the investor relations dashboard. Manage investment and analyst communities and broaden exposure to potential investors.

Stock price drivers

The IR dashboard delivers a synthesized view of the underlying factors that may be causing movement in your company’s stock price. With the company and peer barometers, monitor key external developments such as revisions to earnings estimates, changes in analyst ratings and broker trading volumes.



Investor relations dashboard: IR <GO>

Access company and peer barometers, shareholder analytics, news and research and upcoming events all from a single screen.

Stay on top of current events.

Keep up with important events like earnings releases, guidance calls and industry conferences. Bloomberg tracks more than 100,000 events and transcribes more than 30,000 conference calls annually.

Events calendar

Bloomberg's powerful events calendar will ensure that you never miss an important event. Customize your events calendar to stay on top of earnings releases, industry conferences and the many other events most relevant to your organization.

Document search

Bloomberg's document search allows you to search through a diverse collection of documents such as in-depth research reports, public filings, conference transcripts and presentations from more than 1,500 providers, including brokers, independent providers, market research firms and industry associations.

Ticker	Price	1D Chg	2Day	Volume	AVAT	Mkt Cap	News Sentiment	Rating	EPS Adj
1) NVDA US	306.9	-4.5%		52.91M	--	-35.8B			
Peers									
2) AMD US	144.0	-4.4%		65.44M	--	-8.1B			
3) AMBA US	193.5	-3.4%		1.09M	--	-250.4M			
4) SYNA US	280.1	-2.0%		415.99k	--	-229.0M			
5) INTC US	49.3	-0.5%		29.93M	--	-1.0B			
6) AVGO US	558.1	+1.0%		1.88M	--	+2.3B			
7) QCOM US	176.5	-0.3%		10.13M	--	-582.4M			
8) XLNX US	217.1	-0.7%		4.22M	+34.8%	-406.5M			
9) LSCC US	74.3	-1.6%		922.26k	--	-164.3M			
10) MCHP US	85.3	+1.2%		5.41M	--	+571.5M			
11) SLAB US	193.1	-2.2%		396.71k	--	-178.0M			

Peer barometer: PBAR <GO>

Create a customized list of peers to compare estimates, ratings, pricing, trading volume, news sentiment and more.

Ticker	Description	Date	Time Resources
1) MSFT U...	DeMatteo: Activision Discussion: Time to ...	12/03/21	
2) NOW US	Aliya: ServiceNow corporate access confe...	12/03/21	
3) EXC US...	Capital Alpha: Utilities, Energy Tax - Wha...	12/03/21	
4) DHI US	Dividend Ex-Date	C 12/03/21	
5) UNH US	Dividend Ex-Date	C 12/03/21	
6) NKE US	Dividend Ex-Date	C 12/03/21	
7) SLB US	Cowen 2021 Energy Summit	12/03/21	
8) AKAM US	Nasdaq 45th Investor Conference	12/03/21	
9) ARWR ...	18th Global Cardiovascular Clinical Trialis...	12/03/21	
10) JCT US	Credit Suisse 9th Annual Industrials Conf...	12/03/21	08:50
11) F US	Goldman SachsGlobal Automotive Confere...	12/03/21	08:50
12) CPRT US	Annual General Meeting	12/03/21	09:00
13) ZNGA US	NASDAQ 2021 Technology Conference	12/03/21	10:00
14) SDC US	Stephens Annual Investment Conference	12/03/21	10:00
15) FIWN US	NASDAQ 2021 Technology Conference	12/03/21	10:30
16) KLAC US	NASDAQ 2021 Technology Conference	12/03/21	11:00
17) AFRM US	Annual General Meeting	12/03/21	11:30
18) DMYQ ...	Extraordinary General Meeting	12/03/21	12:00
19) F US	Credit Suisse 9th Annual Industrials Conf...	12/03/21	12:10
20) 073198...	Truist Securities: Salt Lake City Silicon SL...	12/06/21	
21) HSBA L...	Berenberg: Berenberg European Conferen...	12/06/21	
22) LNG US...	Capital One Securities, Inc.: 2021 Energy ...	12/06/21	

Events calendar: EVTS <GO>

Customize event calendars by industry, company, activity type and more.

Target & understand investors.

Bloomberg lets you know your investors better than they know you. Access complete shareholder and bondholder data on your firm and competitors.

Shareholder analysis

Use Bloomberg to help identify current and prospective investors. Discover which investors own your stock or your competitors' stock, while tracking what they are buying and selling.

Bondholder & derivatives data

Bloomberg is an unparalleled source of information on a company's debt holders, including in-depth information on bonds, loans and other debt securities.

Document search: DS <GO>

Perform searches on securities, lists and keywords to quickly discover the documents that support your analysis, all in one place.

New Search		Advanced Search		My Searches		Actions		Investor Search: Results			
<Narrow This Search>								8.7K Investors			
Investor Institution Type		Investor Results									
Investment Advisor	2.7K	Investor Name	# Sec.	Mkt Val	Total Eqy Assets	% Eqy Assets					
Insurance Company	225	11) VANGUARD GROUP	1	62.60BLN	7.12TR	.88					
Hedge Fund Manager	208	12) FMR LLC	1	55.76BLN	2.49TR	2.24					
Bank	202	13) BLACKROCK	1	55.36BLN	5.22TR	1.06					
Brokerage	62	14) STATE STREET CORP	1	31.41BLN	2.30TR	1.37					
Management Style		More...									
Active	7.6K	15) Huang Jen-Hsun	1	27.60BLN	27.60BLN	100.00					
Passive	914	16) VANGUARD TOTAL STOCK MAR...	1	17.03BLN	1.04TR	1.64					
Mixed	165	17) GEODE CAPITAL MANAGEMENT ...	1	12.97BLN	812.59BLN	1.60					
Institution Inclusion											
Include Institutional Filer		18) VANGUARD 500 INDEX FUND	1	11.44BLN	554.53BLN	2.06					
Investor Type											
Fund	5.1K	19) INVESCO QQQ TRUST SERIES 1	1	10.92BLN	206.62BLN	5.29					
Institution	3.5K	20) JENNISON ASSOCIATES LLC	1	9.53BLN	173.54BLN	5.49					
Individual	19	21) FIDELITY GROWTH COMPANY C...	1	9.39BLN	73.24BLN	12.82					
Investor Domicile											
United States	4.4K	22) NORTHERN TRUST CORPORATI...	1	9.08BLN	666.54BLN	1.36					
Luxembourg	796	23) FIDELITY GROWTH COMPANY F...	1	8.69BLN	66.98BLN	12.97					
		24) SPDR S&P 500 ETF TRUST	1	8.61BLN	417.78BLN	2.06					
		25) T ROWE PRICE GROUP INC	1	8.53BLN	1.43TR	.60					
		26) BANK OF AMERICA CORPORATI...	1	8.09BLN	932.02BLN	.87					
		27) BANK OF NEW YORK MELLON C...	1	7.92BLN	709.16BLN	1.12					
		28) FIDELITY 500 INDEX	1	7.66BLN	371.40BLN	2.06					
		29) NORGES BANK	1	7.57BLN	1.03TR	.74					
		30) NORGES BANK GOVERNMENT P...	1	7.40BLN	1.02TR	.73					
		31) UBS	1	6.70BLN	805.09BLN	.83					

Investor search: IS <GO>

Bloomberg leverages unparalleled knowledge of the buy-side community to provide you with a comprehensive picture of the investing landscape for effective investor outreach.

NVDA US Equity				Settings				Security Ownership			
NVDA CORP CUSIP 67066G10											
1) Current 2) Historical 3) Matrix 4) Ownership Summary 5) Insider Transactions 6) Options 7) Issuer Debt											
Compare Current Stats Against 11/28/21											
Institutional - Based on Current Filings				Insider - Based on Last 6 Months							
Institutional	11/28/21	Curr	Change	Insider	11/28/21	Curr	Change				
1) % of Shares Held	70.24	70.2	-0.04%	2) % of Shares Held	4.03	4.03	0.00%				
12) % of Float Held	73.17	73.13	-0.04%	7) % Chg Insider Positions	-0.26	-0.19	+0.07%				
13) # of Institutions	3,713	3,715	+0.05%	23) # of Insiders	19	19	0.00%				
14) # of Buyers	1,509	1,522	+0.86%	24) # of Buyers Opn Mkt	0	0					
15) # of Sellers	1,471	1,465	-0.41%	25) # of Sellers Opn Mkt	9	8	-11.11%				
16) # of New Buyers	356	357	+0.28%	26) # of Shrs Bought Opn Mkt	0	0					
17) # of Selloffs	193	198	+2.59%	27) # of Shrs Sold Opn Mkt	1.66M	1.38M	-16.80%				
18) % Chg in Inst Positions	-4.72	-4.73	-0.01%	28) Avg Opn Mkt Buy Price	0	0	0.00%				
				29) Avg Opn Mkt Sell Price	200.87	208.61	+7.74%				
Top Geographic Ownership (%)				Top Ownership Type (%)							
Geographic	11/28/21	Curr	Change	Ownership Type	11/28/21	Curr	Change				
31) United States	72.08	72.08	0.00%	4) Investment Advisor	72.22	72.21	-0.01%				
32) United Kingdom	7.23	7.25	+0.02%	42) Bank	7.12	7.12	0.00%				
33) Unknown	5.42	5.43	+0.01%	43) Individual	5.42	5.42	0.00%				
34) Canada	2.78	2.78	0.00%	44) Pension Fund	3.77	3.77	0.00%				
35) Japan	2.34	2.34	0.00%	45) Sovereign Wealth Fund	2.38	2.38	0.00%				
36) Switzerland	1.76	1.76	0.00%	46) Brokerage	2.33	2.33	0.00%				
37) Germany	1.44	1.44	0.00%	47) Trust	1.92	1.92	0.00%				
38) Norway	1.35	1.35	0.00%	48) Hedge Fund Manager	1.79	1.79	0.00%				
39) Luxembourg	1.08	1.05	-0.03%	49) Insurance Company	1.79	1.79	0.00%				

Shareholder comparisons: OWN IR <GO>

Compare shareholder activity in your stock versus shareholder activity in that of your peers.

Fund manager contact information

Easily access detailed contact information on the institutional investors most important to you and your organization – including rich biographical and background information using the People Search tool, PEOP <GO>.

Investor portfolio analytics

Access current and historical holdings data for unique insights into managers' investment strategies. Review activity in their portfolios, sector by sector, stock by stock.

BlackRock Inc Currency USD

Summary Holdings Funds Contacts Interactions Activist

Total Equity Assets 419.8B Inst Type Investment Advisor Website www.blackrock.com
 Holdings 13,573 Management Style Mixed Address 55 East 52nd Street, New York, NY 10055, United States
 Funds Managed 343 Filer Type 13F
 Filing Date 09/30/2021

About
 BLACKROCK INC is an Investment Advisor with total current equity assets of \$419.8B under management invested in 13,573 securities.

By industry sector, its largest current exposures are in the Technology (17.9%) and Financials (11.4%) sectors. Its largest five-year increase is in the Technology sector.

By geographic region, its largest current exposures are in North America (62.9%) and Western Europe (25.8%). Its largest five-year increase is in North America.

By market cap, its largest current exposures are in Large Cap (84.3%) and Mid Cap (11.1%) stocks.

Historical Breakdown
 Breakdown by Sector Region Market Cap

Sector	%Port	MV	MV Δ	# Sec
Technology	17.9	75.3B	5.8B	1,518
Other	16.8	70.3B	3.0B	731
Financials	11.4	47.9B	1.2B	1,761
Health Care	9.3	38.9B	469.8M	1,539
Consumer Discretionary	8.7	36.6B	2.2B	1,647
Industrials	8.5	35.9B	3.2B	1,820
Materials	6.8	28.6B	4.2B	1,174
Communications	6.6	27.7B	-570.0M	700

Investor profile: IP <GO>

Access comprehensive investor profiles to perform in-depth ownership research on your current investor base and prospect for new investors.

Stay ahead of analysts.

Bloomberg lets you know your analysts as well as they know you. A single, integrated platform provides complete analyst recommendations, research and consensus estimates. Information is updated in real time and is available historically for deeper analysis.

Research coverage

Rank analysts by current or historical recommendations and compare what they are saying today to how their recommendations have performed historically. Drill down to read the actual reports.

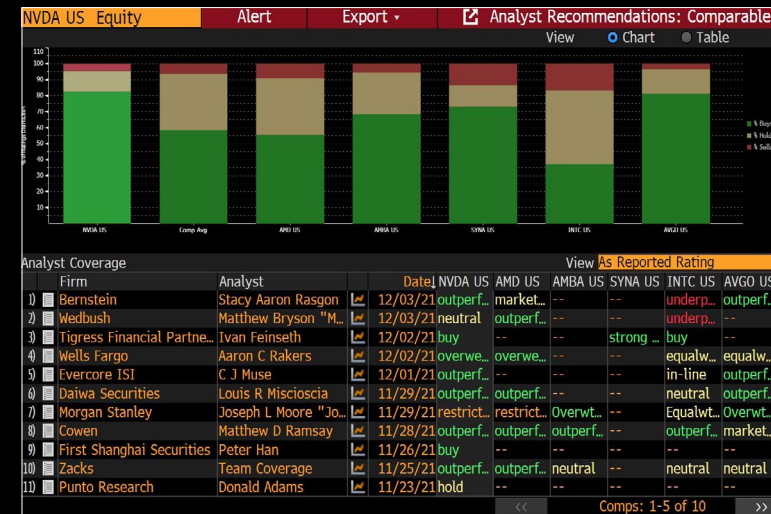
Organized & searchable research

Our research delivery is the fastest in the market and allows you to set up alerts so you don't miss research on your company or industry.

Hide Filters	Ticker	Headline	Source	Pg	Date
Primary		Configure Your Daily Research Digest			
Internal					
Model					
Annotated Reports					
My Annotations					
Shared With Me					
Analyst					
Harlan Sur					
William Peterson					
Woo Jin Ho					
Anand Srinivasan					
Source					
JP Morgan					
Insider Insights					
Trading Central					
Mizuho Securities					
Type					
Equity					

Research portal: BRC <GO>

Analyst research on your company, its peers and the broader industry is archived, organized and searchable.



Analyst recommendations comparables: ANR COMPS <GO>

Compare analyst ratings of your stock to that of your peers.

Analyst profiles & coverage

Better understand the analysts writing about your company and industry with comprehensive coverage lists, recommendation history, career details and contact information.

Earnings estimates

Consensus and individual earnings estimates, with history and analytics, are available for your company as well as for other companies you are following.

Gain industry & competitive intelligence.

Bloomberg helps you to identify and evaluate competitors and provides relative value tools that measure how you compare on the financial metrics that you care about most.

Rich industry perspective

Get key industry data, interactive charting and written analysis from a team of industry experts that enable you to gain better insight into where an industry stands today and where it might be headed in the near future.



Estimate history: EEB <GO>

Track and analyze consensus projections over time and across analysts.



Estimates distribution: EE DIST <GO>

Identify the deviations of individual analyst estimates from your company's guidance or market consensus.



Bloomberg intelligence: BI <GO>

Access proprietary real-time research and analyses by analysts with extensive sell- and buy-side experience to help you evaluate and analyze key industry metrics and drivers.

Broker	Rank	Broker Vol	% Total	% Exch	# Rpts	High Touch	Low Touch
1. VIRT	1	749.097M	36.25	17.42	9,116	--	--
2. MSCO	2	224.582M	10.87	5.22	13,429	--	--
3. CSFB	3	186.929M	9.05	4.35	382	--	--
4. JPM	4	143.662M	6.95	3.34	24,944	--	--
5. UBS	5	111.441M	5.39	2.59	458	8.262M	103.179M
6. MLCO	6	107.140M	5.19	2.49	35,969	--	--
7. SUSQ	7	96.221M	4.66	2.24	8,759	--	--
8. GS	8	77.223M	3.74	1.80	53,538	37.078M	40.146M
9. BCAP	9	74.825M	3.62	1.74	4,238	168,943	--
10. CITI	10	71.809M	3.48	1.67	917	41.658M	30.025M
11. INCA	11	29.284M	1.42	0.68	724	--	--
12. JEFF	12	27.773M	1.34	0.65	1,280	19,993	--
13. RBC	13	18.609M	0.90	0.43	6,776	--	--
14. HSBC	14	13.630M	0.66	0.32	237	--	--
15. WELS	15	11.881M	0.57	0.28	6,510	--	--
16. BNPP	16	10.389M	0.50	0.24	35	10.389M	--
17. RAJA	17	9.259M	0.45	0.22	3,805	--	--
18. COWN	18	8.429M	0.41	0.20	433	758,693	--
19. BMOI	19	8.103M	0.39	0.19	592	--	--
20. CSTI	20	7.314M	0.35	0.17	1,364	--	--

**Broker rankings:
RANK <GO>**

Identify and rank the brokers that provide the most liquidity in your shares and your industry.

Fundamental analysis

Analyze and evaluate your competitors and industry with the same tools – such as Bloomberg’s unique and customizable relative value tables – used by analysts, bankers and brokers.

Screen the competition

Build custom searches using fundamental, descriptive and market data to better understand how you compare with your industry on key criteria.

Track & monitor the competition

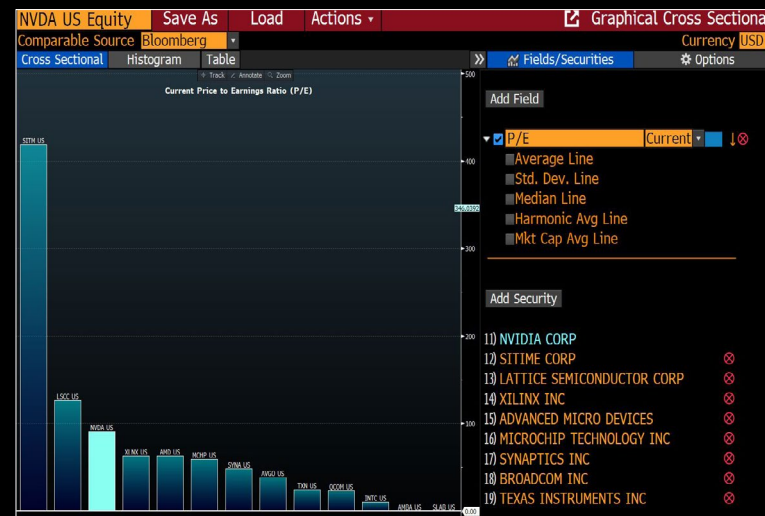
Track and monitor your competition by geography, organization, industry peer or business unit. Compare your performance with theirs across individual business lines to better understand how you measure up.

Metric	Current	Hist Avg	Diff	# SD	3M	6M	1Y	2Y	5Y
1) BF P/E	79%	63%	16%	1.2	37%	93%	55.6x	280.07	
2) BF EV/EBITDA	--	157%	--	--	93%	243%	46.3x	280.55	
3) BF EV/EBIT	98%	79%	19%	1.2	49%	119%	47.5x	277.56	
4) BF EV/Rev	--	--	--	--	101%	200%	--	--	
5) LF P/BV	--	--	--	--	181%	301%	--	--	

Name	2Y Corr	Mkt Cap (USD)	BF P/E	BF EV/EBITDA	BF EV/EBIT	BF EV/Rev	LF P/BV
1) NVIDIA Corp		767.33B	60.9x	50.7x	52.6x	24.6x	32.3x
2) Advanced Micro Devices Inc	0.75	173.91B	44.1x	33.1x	36.3x	9.0x	24.5x
3) Broadcom Inc	0.71	229.73B	17.9x	14.7x	15.2x	8.9x	11.1x
4) Microchip Technology Inc	0.69	47.31B	17.8x	16.6x	17.7x	7.8x	16.6x
5) Xilinx Inc	0.68	53.80B	50.0x	39.0x	45.4x	13.1x	15.8x

**Equity relative valuation:
EQRV <GO>**

Evaluate whether a company is fairly valued based on historical performance on selected multiples relative to a peer group.



**Cross sectional analysis:
GX <GO>**

Stay on top of competitive moves in your sector and see how competitors are raising capital.

Monitor markets.

Stay on top of real-time developments in the markets relevant to your business from FX, interest rates and commodities to equities, bonds and CDS.

Charting

Unique features enable you to chart everything from your stock price to capital structure and equity options to fundamentals, short interest, news, corporate actions and competitive performance.

Corporate actions

Follow corporate actions and know what others in your industry are doing in the capital markets.

NVDA US Equity % Actions Export Settings Financial Analysis							
NVidia Corp ASC 842 BQL Periodicity Annuals Cur FRC (USD)							
Key Stats I/S B/S C/F Ratios Segments Addl ESG Custom Shared							
11 BBG Adj Highlights 12 BBG GAAP Highlights 13 Company Model 14 Earnings 15 Enterprise Value 16 EV Ex Operating...							
In Millions of USD	2018 Y	2019 Y	2020 Y~	2021 Y	Current/LTM	2022 Y Est	2023 Y Est
12 Months Ending	01/28/2018	01/27/2019	01/26/2020	01/31/2021	10/31/2021	01/31/2022	01/31/2023
Market Capitalization	147,458.0	97,050.9	153,293.8	322,145.8	767,325.0		
- Cash & Equivalents	7,108.0	7,422.0	10,897.0	11,561.0	19,298.0		
+ Preferred & Other	0.0	0.0	0.0	0.0	0.0		
+ Total Debt	2,000.0	1,988.0	2,643.0	7,718.0	11,827.0		
Enterprise Value	142,350.0	91,616.9	145,039.8	318,302.8	759,854.0		
Revenue, Adj	9,714.0	11,716.0	10,918.0	16,675.0	24,274.0	26,673.8	31,682.7
Growth %, YoY	40.6	20.6	-6.8	52.7	64.3	60.0	18.8
Gross Profit, Adj	5,823.0	7,206.0	6,782.0	10,859.0	15,993.0	17,791.7	21,279.3
Margin %	59.9	61.5	62.1	65.1	65.9	66.7	67.2
EBITDA, Adj	3,423.0	4,112.0	3,386.0	6,649.0	10,552.0	12,599.4	15,448.7
Margin %	35.2	35.1	31.0	39.9	43.5	47.2	48.8
Net Income, Adj	2,916.8	3,772.9	2,836.5	5,079.2	8,389.4	11,000.3	13,121.1
Margin %	30.0	32.2	26.0	30.5	34.6	41.2	41.4
EPS, Adj	1.15	1.51	1.15	2.02	3.32	4.34	5.17
Growth %, YoY	77.4	30.9	-24.1	76.4	86.8	114.5	19.2
Cash from Operations	3,502.0	3,743.0	4,761.0	5,822.0	8,142.0		
Capital Expenditures	-593.0	-600.0	-489.0	-1,128.0	-986.0	-992.7	-1,098.7
Free Cash Flow	2,909.0	3,143.0	4,272.0	4,694.0	7,156.0	7,926.8	11,515.9

Fundamental analysis – FA <GO>

Analyze the financial history of your company or its peers with full data transparency.



Interactive charting – GP <GO>

Chart price, volume, corporate actions and events to better understand stock price movements.

Intraday performance

Monitor stock prices and trading volume, including block trades, for the stocks that matter most to you throughout the trading day.

Market surveillance

Comprehensive market monitoring tools allow you to monitor and compare real-time price and volume data for the world's equity indices and credit markets. See the impact on your sector, company or industry.

Index	2Day	Value	Net Chg	%Chg	Δ AVAT	Time	Adv/Dcl	%Ytd	%YtdCur
1) Americas									
11) DOW JONES		34580.08	-59.71	-0.17%	+2.22%	16:20 c	15 / 15	+12.98%	+12.98%
12) S&P 500		4538.43 d	-38.67	-0.84%	+4.97%	16:15 c	197 / 306	+20.83%	+20.83%
13) NASDAQ		15085.47	-295.85	-1.92%	+9.11%	16:30 c	616 / 2793	+17.05%	+17.05%
14) S&P/TSX Comp		20633.27 d	-128.76	-0.62%	+0.32%	16:10 c	71 / 157	+18.36%	+17.27%
15) S&P/BMV IPC		50600.00 d	-327.38	-0.64%	-23.15%	16:10 c	14 / 21	+14.83%	+7.52%
16) IBOVESPA		105069.70 d	+603.50	+0.58%	+13.56%	16:15 c	70 / 20	-11.72%	-18.89%
17) CHILE SLCT		4369.40 d	-1.50	-0.03%	+72.63%	15:44 c	16 / 13	+4.60%	-11.66%
18) Colom COLCAP		1431.94	-8.95	-0.62%		16:12 c	10 / 10	-0.41%	-13.97%
19) ARG Merval		86359.78 d	-1091.49	-1.25%	-19.20%	15:20 c	6 / 16	+68.58%	+40.23%
20) S&P/BVL Peru		19981.55 d	-182.09	-0.90%	+53.85%	16:02 c	6 / 15	-4.04%	-14.83%
2) EMEA									
21) Euro Stoxx 50		4080.15 d	-27.87	-0.68%	-15.08%	11:50 c	13 / 37	+14.85%	+6.33%
22) FTSE 100		7122.32 d	-6.89	-0.10%	-22.60%	11:35 c	47 / 52	+10.24%	+6.79%
23) CAC 40		6765.52 d	-30.23	-0.44%	-19.35%	12:05 c	10 / 30	+21.87%	+12.83%
24) DAX		15169.98 d	-93.13	-0.61%	-14.29%	12/03 c	10 / 30	+10.58%	+2.37%
3) Asia/Pacific									
31) NIKKEI		28029.57 d	+276.20	+1.00%	-6.34%	12/03 c	210 / 15	+2.13%	-6.50%
32) HANG SENG		23766.69 d	-22.24	-0.09%	+43.40%	12/03 c	42 / 17	-12.72%	-13.22%
33) CSI 300		4901.02 d	+44.86	+0.92%	+8.52%	12/03 c	212 / 74	-5.95%	-3.73%
34) S&P/ASX 200		7241.17	+15.99	+0.22%	-12.73%	12/03 c	118 / 75	+9.93%	-0.01%

World equity indices: WEI <GO>

Track key equity indices to determine momentum, direction and volatility at a glance.

US Dollar Settings Fixed Income Credit Monitor

Investment Grade High Yield Emerging Markets

Market Indices	Spread	Chg Spread	Low	High	Avg	1M Chg
1) CDX Investment Grade	58.46	+1.12	49.7	59.1	52.9	+6.3
2) ETF	147.92	+12.69	132.89	155.50	141.52	+12.17

Historical Range 1 Month

Chart View Range View

Bond Sectors	OAS	Chg (bps)	T/W	ΔAVAT	NI (MM)
All Cash Bonds	112.3	-8.6	38:1	+32.2%	27,412
3) Communications	144.1	-10.3	394:0	+57.2%	4,300
4) Technology	103.3	-10.0	433:1	+23.9%	--
5) Energy	142.2	-9.7	249:1	+38.8%	--
6) Health Care	108.6	-9.4	61:1	+24.9%	1,500
7) Industrials	109.6	-9.4	102:1	+30.8%	625
8) Consumer Staples	114.0	-9.3	150:1	+59.3%	2,850
9) Consumer Disc.	105.2	-8.8	38:1	+18.7%	212
10) Utilities	129.7	-8.8	46:1	+4.6%	4,850
11) Materials	141.2	-8.7	267:0	-2.3%	--
12) Financials (Sub)	129.0	-7.5	6:1	+38.0%	--
13) Financials (Sr)	88.7	-6.7	19:1	+37.1%	13,075

Spread Chart - 1 Month

Cash vs CDX CDX vs ETF Cash vs ETF

News | NSF »

- 101) U.S. High-Grade Primary Sales to Pause for Friday Payroll Report BFW 08:01
- 102) U.S. IG ISSUANCE: Daimler Trucks' Multipart Deal Leads Session BFW 12:02
- 103) Five Companies Eyeing New U.S. High-Grade Bond Sales Thursday BFW 12:02
- 104) LAUNCH: DiversiTech \$875m 1Ls, \$240m 2L for LBO; Call Dec. 6 BFW 16:24

Fixed income credit monitor: FICM <GO>

Monitor credit markets and see how movements impact your sector.

Monitor news.

Monitor the news flow on your company and industry more efficiently with screening and organization tools. Access exclusive innovative Bloomberg News content and thousands of other sources, including blogs.

Customizable news panels

Customizable news panels include real-time audio and visual alerts as well as keyword searching on the companies you monitor.

Earnings & research notes

Earnings releases and research notes come across your screen as they are released, keeping you on top of the markets.

12:12 From Tesla to Nvidia, Wall Street's Favorites Keep Tumbling

- Big tech, high-growth stocks sell off on Fed taper worries
- NYFANG Index is heading into correction territory on pullback

The highest-flying of Wall Street's stock-market darlings are now taking a major beating. Tesla Inc., Nvidia Corp., Netflix Inc. and Facebook-owner Meta Platforms Inc. have all lost 10% to 20% over the past few weeks. That wiped several... More

11:10 Nvidia Slumps; Citi Analyst Says Arm Deal Remedies Needed (1)

NVDA US

Nvidia shares drop as much as 6%, the most intraday since Nov. 10, after U.S. antitrust officials sued to block its \$40b takeover of Arm. Citi says deal looks less probable, but sees a possible path forward if Nvidia can present remedies.

- Tech stocks are also sinking Friday as traders weigh the weaker-than-expected jobs report
- READ, U.S. Sues to Block Nvidia's \$40 Billion Chip Takeover of Arm (2) ... More

09:38 M&A Watch: AmEx Global Business Travel, Apollo, Nvidia, Arm

In new deals, American Express Global Business Travel will go public via a combination with Apollo Strategic Growth Capital.

Among ongoing situations, U.S. antitrust regulator sued to block Nvidia's proposed takeover of Arm, while its European counterpart also halted the deal review. Sportsman's Warehouse said it agreed with Great Outdoors Group to terminate... More

03:55 EU Stops Clock in Nvidia/Arm Deal Review to Seek More Info (1)

First word:
FIRST <GO>

Receive news summaries based on your preferences in a concise format.

News summaries

Bloomberg's First Word summarizes the news and communicates the information most important to you.

Ranking technology

Innovative news-ranking technology monitors sentiment in news flow, indicating spikes in readership in the categories, companies and industries most important to you.

Social media

Monitor social media postings on your firm and industry from Twitter, Yahoo! Finance and other sources.

Security	Δ Act.	GN	Δ Price	Δ AVAT	News Summary
1) DocuSign Inc			-42.22%	+1.82%	Weak Guidance Drags Stock Down
2) Bank of Montreal			+2.35%	+35.31%	Bank of Montreal Stock Gains After Q4 Earnings
3) Didi Global Inc			-22.18%	+421.89%	Didi Global to Delist Pursue Listing in Hong Kong
4) Medline Industries Inc					Interview With Gail Rutkowski
5) Marvell Technology I...			+17.68%	+445.74%	Marvell Tops Q3 Earnings
6) Adobe Inc			-8.24%	+153.34%	Adobe Stock Stumbles Toward Worst Day
7) Fortive Corp			+0.38%	-39.69%	Fortive FTV to Buy to Acquire Provation Software
8) National Bank of Can...			-0.48%	-23.04%	Bank Stocks Whipsaw Canada's Market
9) International Olympi...					WTA Suspends Tournaments Over Peng Shuai
10) Baidu Inc			-7.77%	+106.91%	Chinese Firms Drop on Didi's Plans
11) Bank of Nova Scotia/...			-0.86%	-27.75%	'Big Six' Banks Raise Dividends
12) ARK Innovation ETF			-5.54%	+38.95%	ARK Innovation ETF Sank
13) Alibaba Group Holdin...			-8.23%	+118.49%	Chinese Firms Drop on Didi's Plans
14) Sinovac Biotech Ltd				0.00%	Sinovac Says Beijing Settled Litigation
15) Singapore Airlines Ltd			+0.62%	-20.36%	Forgotten History of the SIA Barbie Doll
16) Sinopharm Group Co. ...			+3.46%	+41.91%	Pfizer's Covid Pill to Lift Suppliers
17) Kingdom of Denmark					Snowstorm Forced Spend Night in IKEA
18) Canadian Imperial B...			+2.05%	-46.82%	Canadian Imperial Bank of Commerce Original Story
19) Asana Inc			-26.40%	+190.21%	Asana Incurred Loss of \$0.23 Per Share in Q3
20) CanSino Biologics Inc			+1.52%	-54.01%	No News Theme or Notable Headline Found

News sentiment analysis: NRS <GO>

See which companies in your industry are receiving the most positive or negative news coverage and which are the most-read stories on your company and industry.

Stay connected.

Keep in touch with colleagues and contacts and share information across your network using Bloomberg's superior communication capabilities.

Share your ideas

Distribute vital information quickly and easily across a group, giving you complete control over content, organization and permissions. Create topic-based notes so you can organize and share information on securities, people, research and news stories with your contacts across teams and offices.

My Notes					
All					
Show Filters All Notes					
	Title	Creator	Last Updater	Tags	Updated
120	Event Tech Live	BoMin Kim	BoMin Kim	Industry Con...	12:39
121	2017 Conference	BoMin Kim	BoMin Kim	Industry Con...	12:39
122	2017 Conference	BoMin Kim	BoMin Kim	Industry Con...	12:39
123	2017 Conference	BoMin Kim	BoMin Kim	Industry Con...	12:39
124	5.100+n/N Obs Period 1/28/18-2/28/18: 100...	Pius Sangbong	Pius Sangbong	GS Float 02/...	12:38
125	BDAP Workitem ID : 17345428 {NSN P43N356...	Krupesh Patel	Krupesh Patel	TDG TL G 1L ...	12:38
126	BDAP Workitem ID : 17345428 {NSN P43N356...	Krupesh Patel	Krupesh Patel	TDG SEC USD...	12:37
127	BDAP Workitem ID : 17345244 Source: A1 00...	Adrienne Cole	Adrienne Cole	SDLP REV 1L...	12:37
128	BDAP Workitem ID : 17345244 Source: A1 00...	Adrienne Cole	Adrienne Cole	SDLP TL B 1L...	12:37
129	BDAP Workitem ID : 17345244 Source: A1 00...	Adrienne Cole	Adrienne Cole	SDLP SEC US...	12:37
130	As per SDSK 860636004 update the attached ...	Marcia Bouzas Casal	Marcia Bouzas Casal	BCPPL Float ...	12:36
131	JIRA Key: FCME-338301 Sender Name: WEB C...	Monika Pilat	Monika Pilat	KRIPW 0 12/...	12:35
132	Obs Date 02/13/18: RTY INDEX 1,488.21 SPX ...	Pius Sangbong	Pius Sangbong	GS Float 12/...	12:35
133	BDAP Workitem ID : 17344680 Flipped loan to...	Ryan Kaplan	Ryan Kaplan	JANINT TL 1L...	12:31
134	BDAP Workitem ID : 17344680 Flipped loan to...	Ryan Kaplan	Ryan Kaplan	JANINT SEC ...	12:31
135	JIRA Key: FCME-338272 Sender Name: WEB C...	Monika Pilat	Monika Pilat	PNDPW 0 12...	12:31
136	http://www.kdpw.pl/Regulacje/Uchwaly/2...	Monika Pilat	Monika Pilat	PNDPW 0 12...	12:30
137	BDAP Workitem ID : 17345366 {NSN P43JT66...	Ceres Ribeiro	Ceres Ribeiro	DIGROO REV ...	12:29
138	BDAP Workitem ID : 17345366 {NSN P43JT66...	Ceres Ribeiro	Ceres Ribeiro	DIGROO TL 1L...	12:29
139	BDAP Workitem ID : 17345366 {NSN P43JT66...	Ceres Ribeiro	Ceres Ribeiro	DIGROO SEC ...	12:29
140	Updated Floor due to Terms Stating that the ...	James Beckley	James Beckley	NAVIRA Float...	12:28
141	Replaced BYXS600 with BD18P4 as per https...	Fredrik Schulz-Jani...	Fredrik Schulz-Jani...	HTGC 4 % 0...	12:28
142	Updated Floor due to Terms Stating that the ...	James Beckley	James Beckley	NAVIRA Float...	12:28

Shared notes: NOTE <GO>

Share research and market commentary, track order requests and histories and manage client communications across your network.

People search

Access and search for more than 2.9 million people in the Bloomberg Profiles (BBDP) database. Search on a range of biographical information exclusive to Bloomberg that you can use to find contacts and learn about the people you need to reach.

Clear Search
Actions
People Search

Results helpful?

Hide Criteria
Total Profiles 3,789,204

Contact More

<Name>

<Focus>

Career More

<Company / Fund> +

<Role>

<Location>

<Industry of Company/Fund>

Boards/Membership More

<Organization> +

Education More

<School>

Keyword

<Keyword>

Search my SPDL Contacts

Bloomberg Users Only

Sample Searches

California Fund Managers with \$100M-\$1B AUM

US Mid-Cap Company Execs Who Make >\$5MM

Bloomberg Users who went to Northwestern

Board Members of FTSE 100 Companies

Financial Risk Managers (FRMs) in Hong Kong

Chartered Market Technicians

Aerospace & Defense Analysts

CFOs of Firms in the Dow Jones Industrial

Saved Searches

New Results Name	Subscribe

People search: PEOP <GO>

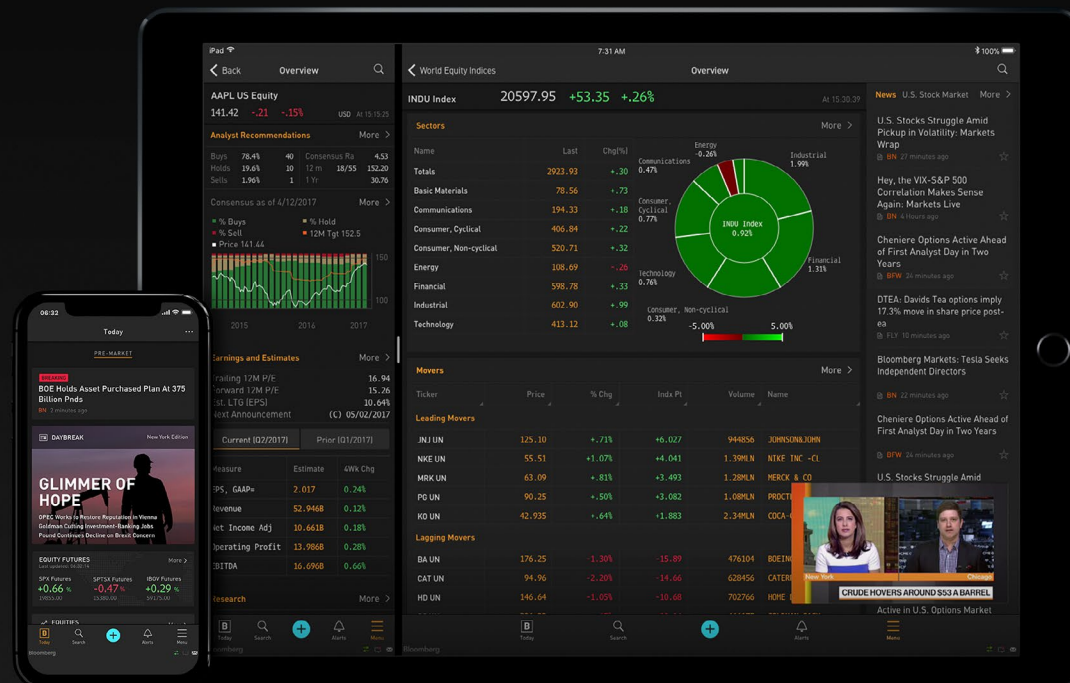
Search for your contacts and colleagues using Bloomberg.

Information on the go.

Our mobile Blackberry®, iPhone®, iPad® and Android® devices enable you to send and receive Bloomberg Messages, view customized price and news alerts, access your Bloomberg Launchpad, monitor events and markets, view charts and more.

Get it anywhere

Bloomberg Anywhere® enables you to access the full power of the Bloomberg Terminal from any Internet-ready computer or mobile device. Simply log into your account and get the same desktop experience.



Securing your world

Bloomberg Anywhere requires the Bloomberg B-UNIT, a state-of-the-art biometric security device that unlocks the Bloomberg Terminal. The B-UNIT gives you confidence that your information will be protected at all times, with enhanced identity protection that uses a scanner to validate your fingerprint. In today's volatile markets, access to the fastest and deepest news is essential to gaining an edge. Whether at home, in meetings or on the road, you will find it easy to leverage the full power of the Bloomberg Terminal.

Learn more

Learn more about what the Bloomberg Terminal can do for you or to catch up on our latest thought leadership, please visit bloomberg.com/investorrelations, or contact us directly at ir_update@bloomberg.net.

