

**Bloomberg**

# **Windows Set Permissions Tool**

**English**

13 January 2023

Version: 3.5

## Introduction

This document explains what the Set Permissions Tool is used for and how to use it. This tool has been included in the SOTR full-installer in order to make it easier for Microsoft Windows Operating System users to install the Bloomberg Terminal®.

**This tool will help set the permissions necessary to run the Bloomberg application and receiving automatic updates of the components. The SOTR full-installer silently perform the Set Permissions Tool automatically when installing the Bloomberg Terminal® on a Windows Operating System. Therefore, usually user does not have to perform this Tool manually.**

There is a Simple mode available which grants permissions to the current user(s), or Advanced mode for selecting additional user permissions. Simple mode is automatically and silently performed during installation.

\* **Note:** Please refer to Software Compatibility Matrix for Microsoft Windows Operating System supported by Bloomberg Terminal®.

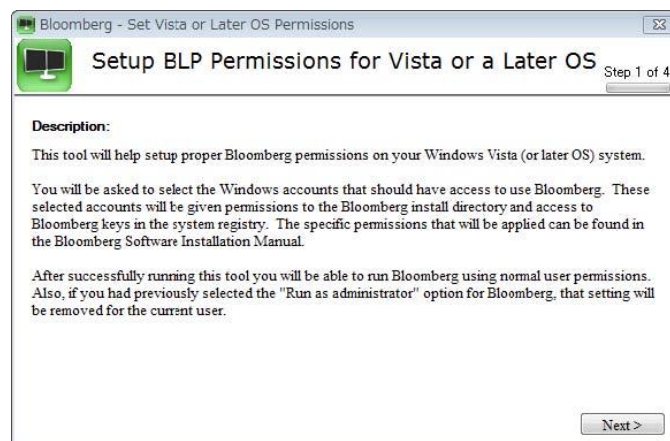
## Requirements

To install correctly, the Tool requires Local Administrative privileges to run, plus Administrative access over the accounts that you want to set the permissions for. It also requires Microsoft .NET Framework 4.6 or later versions to run properly.

## Running the tool

### Step 1: Run the installer

Please note that the SOTR full-installer will auto-launch on first install. If changes are needed afterwards, SetPermissions.exe needs to be run from the *Wintrv* folder, which is, by default, *C:/blp/Wintrv*. The following window will appear.

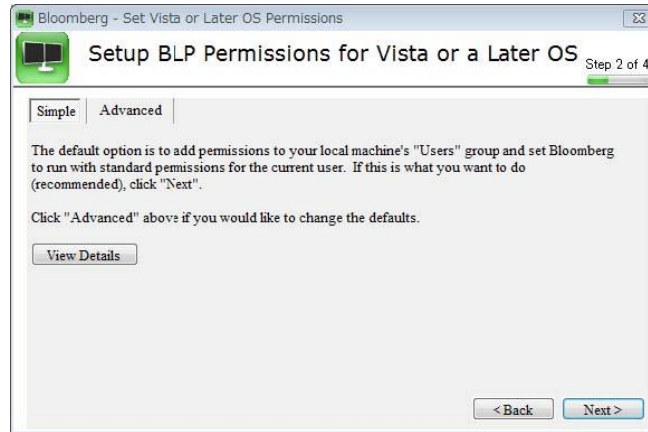


For 24 hour global customer support call +1 212 318 2000, +44 20 7330 7500, +65 6212 1000, +81 3 4565 8900 or press the HELP key twice on the Bloomberg Terminal®.

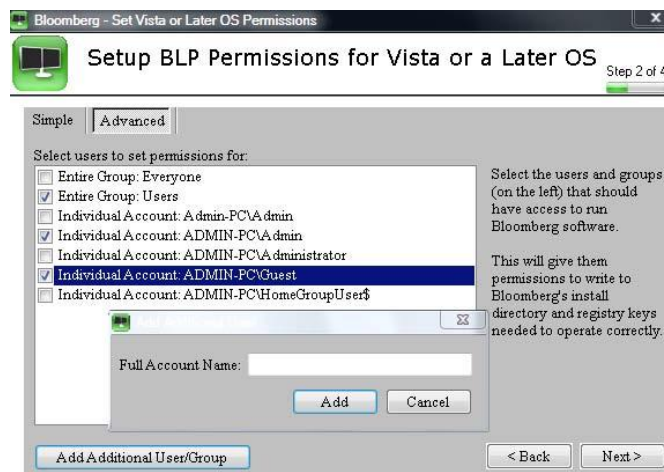
**Bloomberg**

## Step 2: Choose setup mode

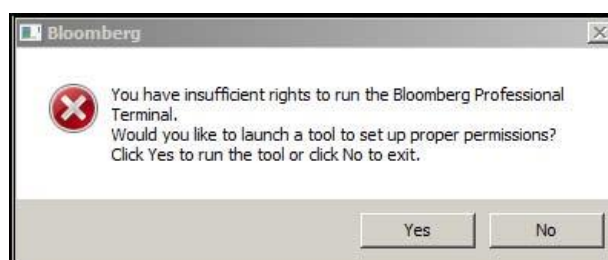
After clicking *Next* you will be asked to choose either simple or advanced setup. If only the current user group (or if there is only one user who) will need to use Bloomberg on this PC, then simple mode will set this up automatically. You will then be taken to step 3.



Instead, if you have more than one user (group) that you need to enable the required permissions for, then choose Advanced mode. The users/groups that are automatically detected will be available in the list to choose. There is also the option of specifying other accounts by clicking *Add Additional User/Group*. You can then type the name and click *Add*.



\* **Note:** If for some reason the permissions are not set properly, the next time user try to execute the Bloomberg application, user will be prompted with the following screen.



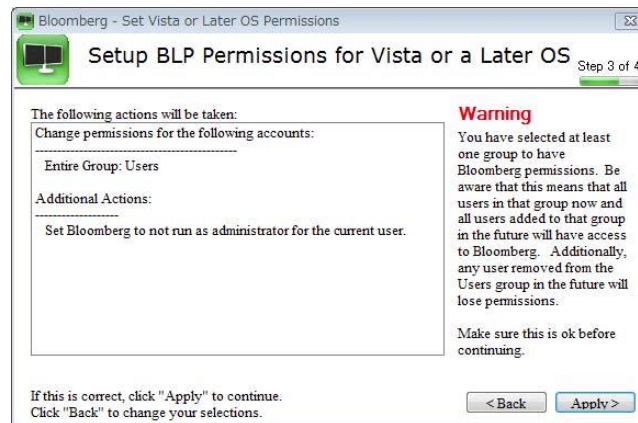
For 24 hour global customer support call +1 212 318 2000, +44 20 7330 7500, +65 6212 1000, +81 3 4565 8900 or press the HELP key twice on the Bloomberg Terminal®.

**Bloomberg**

If the user clicks *Yes* in the above pop-up, then the Set Permissions Tool will re-launch and prompt the user to set the permissions. Please check the *Requirements* section above before doing so. If the problem persists, please contact Bloomberg support.

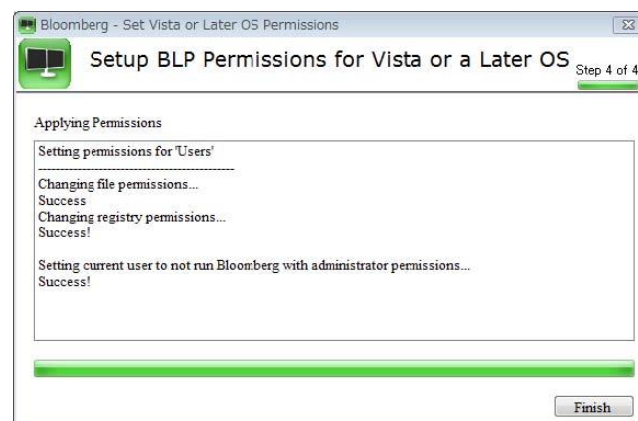
### Step 3: Confirm settings

At Step 3, the groups you have chosen are displayed for confirmation. If they are correct then *Apply* to proceed to Step 4. If you need to change the selection, click *Back* to go back to Step 2 again.



### Step 4: Apply the changes

At Step 4 the Tool will then apply the changes and respond with either success or failure. On success you will receive a final popup confirming that you can now run the Bloomberg Terminal®. If there is a failure, check the current user has permissions to write to the registry. Your Systems Administrator can confirm this.



\* **Note:** The changes made by this Tool are saved in blpsp.log, which is, by default, *C:/blp/Wintrv*.

For 24 hour global customer support call +1 212 318 2000, +44 20 7330 7500, +65 6212 1000, +81 3 4565 8900 or press the HELP key twice on the Bloomberg Terminal®.

**Bloomberg**