

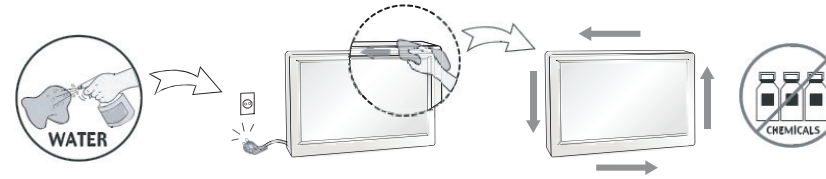
27" Flat Panel S-Series

Technical information
BFP200-27

27" Flat Panel S-Series

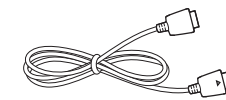
Important precautions

- Spray water onto a soft cloth two to four times, and use it to clean the front frame; wipe in one direction only.
- Too much moisture may cause staining.

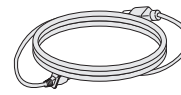


Assembling & preparing

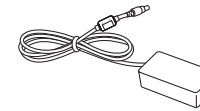
Included accessories



DisplayPort cable

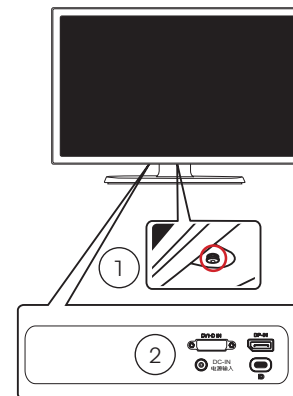


Power cord



AC/DC adapter

Component & button description



Power on

Press the joystick button once with your finger to turn on the monitor.



Power off

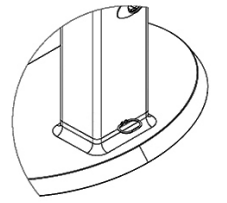
Press and hold the joystick button once with your finger to turn off the monitor when the MENU OSD is off.

1. Power button
2. Input connectors (Power, DisplayPort, DVI-D, USB-C)

27" Flat Panel S-Series

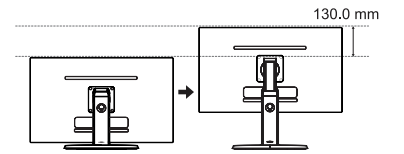
Moving & lifting the monitor

When holding the monitor, the screen should face away from you to prevent it being scratched.



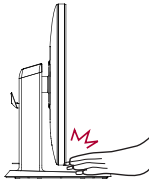
Adjusting the stand height

1. Place the monitor mounted on the stand base in an upright position.
2. Pull out the locking pin at the bottom rear of the stand body. The screen may spring upwards when the pin is removed.
3. The height can be adjusted up to 130.0mm (5.2 in).



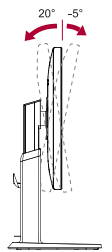
Caution: Once the pin is removed, it is not necessary to re-insert it to adjust the height.

Warning: Do not put your fingers or hand between the screen and the base (chassis) when adjusting the screen's height.

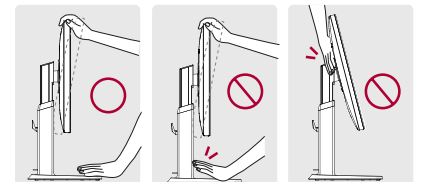


Adjusting the angle

1. Place the monitor in an upright position, mounted on the stand base.
2. Adjust the angle of the screen. The angle of the screen can be adjusted forwards or backwards from -5° to 20° for a comfortable viewing experience.



Warning: To avoid injury to your fingers when adjusting the screen, do not hold the lower part of the monitor's frame as illustrated below.

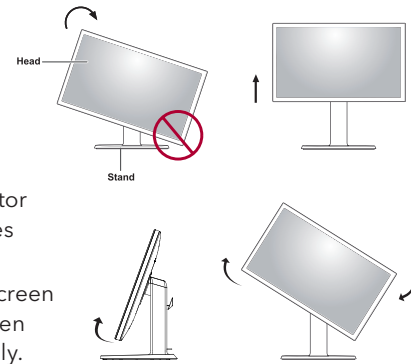


Pivot feature

The pivot feature allows the monitor to rotate 90° clockwise.

Note:

- To avoid scratching the stand base, make sure that when rotating the monitor using the pivot feature, the stand does not make contact with the monitor.
- An image displayed on the monitor's screen does not rotate according to the screen orientation. Adjust Settings accordingly.



1. Raise the monitor up to the maximum height.
2. Adjust the angle of the monitor in the direction of the arrow as shown in the figure.
3. Rotate the monitor clockwise as shown in the figure to 90°.

Using the monitor

Connecting to a PC

This monitor supports the "Plug and Play" feature.

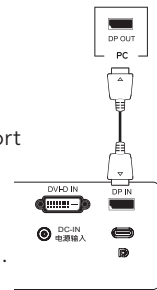
- Plug and Play – A feature that allows you to add a device to your computer without having to reconfigure anything or install any manual drivers.

Note:

- When connecting the power cord to the outlet, use a grounded (three-hole) multi-socket or a grounded power outlet.
- The monitor may flicker when turned on in an area of low temperature. This is normal.
- Sometimes red, green or blue spots may appear on the screen. This is normal.

DisplayPort connection

Connect your PC to the monitor using the DisplayPort cable as shown here. Press the menu button and then select the input option from the input menu.

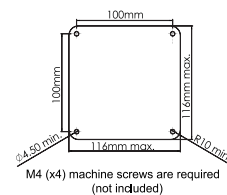


Note:

The use of a Mini-DisplayPort to DisplayPort Adapter may be required depending on available PC outputs.

When mounting without a stand

Monitor mounting plate details.



Specifications

Model number – BFP200-27

Display	Screen type	27" class (27.0" diagonal) TFT (Thin Film Transistor) LCD (Liquid Crystal Display) Screen. Diagonal length of the screen: 68.47 cm	
	Pixel pitch	0.1554 mm x 0.1554 mm	
Resolution	Maximum resolution	3840 x 2160 @ 60Hz	
	Recommended resolution	2560 x 1440 @ 60Hz	
Video signal	Horizontal frequency	30 kHz to 135 kHz	
	Vertical frequency	56 Hz to 61 Hz	
	Synchronization	Separate sync	
Input connector	DVI-D, DisplayPort, USB-C		
Power	Voltage	19.0 V ~ 3.3 A	
	Power consumption (typ.)	On mode: 45 W Power saving mode ≤ 0.5 W Off mode ≤ 0.5 W	
Dimension (WxHxD)	Monitor size (width x height x depth)		
	With stand	615 mm x 528.3 mm x 251.4 mm (max) 615 mm x 398.3 mm x 251.4 mm (min)	
	Without stand	615 mm x 365.1 mm x 39.3 mm	
Weight	6.6 kg		
AC/DC adapter	ADS-110CL-19-3 190110G type, manufactured by Shenzhen Honor Electronic Co., Ltd. Output: 19.0 V ~ 5.79 A		
Stand angle adjustment	Forwards/backwards: -5° to 20° (Head)		
Environmental conditions	Operating condition	Temperature: 10°C to 35°C; Humidity: 10% to 80%	
	Storing condition	Temperature: -20°C to 60°C; Humidity: 5% to 90%	

Power indicator

Mode	On mode	Power-saving	Off mode
LED color	Green	Blinking green	Off



For additional support scan the QR code or visit <https://service.bloomberg.com/contact>

FCC compliance statement

This equipment has been tested and found to comply within the limits of a Class B digital device pursuant to Part 15 of the FCC Rules. These limits are designed to provide reasonable protection against harmful interference in a residential installation.

This equipment generates, uses, and can radiate radio frequency energy and if not installed and used in accordance with the instructions, may cause harmful interference to radio communications. However, there is no guarantee that interference will not occur in a particular installation.

If this equipment does cause harmful interference to radio or television reception (which can be determined by turning the equipment on and off), the user is encouraged to try to correct the interference by using one or more of the following measures:

- Reorient or relocate the receiving antenna.
- Increase the separation between the equipment and the receiver.
- Connect the equipment into an outlet on a circuit different from that to which the receiver is connected.
- Consult the dealer or an experienced radio/TV technician for help.

Caution: Changes or modifications not expressly approved by the party responsible for compliance could void the user's (or your) authority to operate the equipment. Only peripherals (digital input/output devices, terminals, printers, etc) certified to comply with the Class B limits may be attached to this product. Operation with non-certified peripherals is likely to result in interference to radio and TV reception. Only shielded signal cables may be used with this system.

CAN ICES-3 (B)/NMB-3(B)



For additional information, please visit bloombergprofessional.com/hardware.

The data included in these materials are for illustrative purposes only. The BLOOMBERG PROFESSIONAL® service, BLOOMBERG Data and Bloomberg Industries (the "Services") are owned and distributed by Bloomberg Finance L.P. ("BFLP") in all jurisdictions other than Argentina, Bermuda, China, India, Japan and Korea (the "BLP Countries"). BFLP is a wholly owned subsidiary of Bloomberg L.P. ("BLP"). BLP provides BFLP with global marketing and operational support and service for the Services and distributes the Services either directly or through a non-BFLP subsidiary in the BLP Countries. Certain functionalities distributed via the Services are available only to sophisticated institutional investors and only where the necessary legal clearance has been obtained. BFLP, BLP and their affiliates do not guarantee the accuracy of prices or information in the Services. Nothing in the Services shall constitute or be construed as an offering of financial instruments by BFLP, BLP or their affiliates, or as investment advice or recommendations by BFLP, BLP or their affiliates of an investment strategy or whether or not to "buy", "sell" or "hold" an investment. Information available via the Services should not be considered as information sufficient upon which to base an investment decision. BLOOMBERG, BLOOMBERG PROFESSIONAL, BLOOMBERG MARKETS, BLOOMBERG NEWS, BLOOMBERG ANYWHERE, BLOOMBERG TRADEBOOK, BLOOMBERG TELEVISION, BLOOMBERG RADIO, BLOOMBERG PRESS and BLOOMBERG.COM are trademarks and service marks of BFLP, a Delaware limited partnership, or its subsidiaries. ©2017 Bloomberg Finance L.P. All rights reserved. S753563535 0117