

A Bloomberg Professional Services offering

Bloomberg Terminal

Hardware

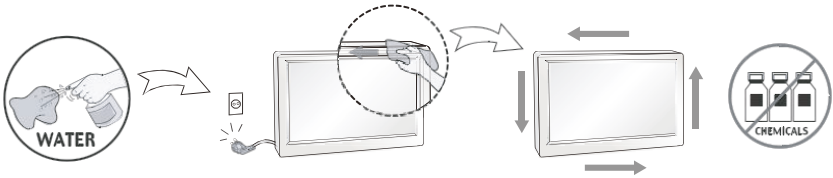
# 24" Flat Panel B-Series

Technical information  
BFP300-24

**Bloomberg**

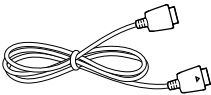
### Important precautions

- Spray water onto a soft cloth two to four times, and use it to clean the front frame; wipe in one direction only.
- Too much moisture may cause staining.



### Assembling & preparing

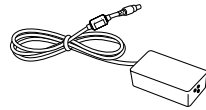
#### Included accessories



DisplayPort cable

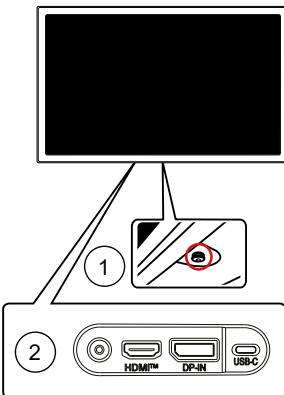


Power cord



AC/DC adapter

#### Component & button description



#### Power on

Press the joystick button once with your finger to turn on the monitor.



#### Power off

Press and hold the joystick button once with your finger to turn off the monitor when the MENU OSD is off.

1. Power button
2. Input connectors (Power, HDMI, DisplayPort, USB-C)

## Using the monitor

### Connecting to a PC

This monitor supports the "Plug and Play" feature.

- Plug and Play – A feature that allows you to add a device to your computer without having to reconfigure anything or install any manual drivers.

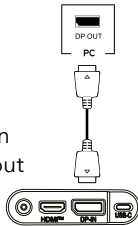
#### Note:

- When connecting the power cord to the outlet, use a grounded (three-hole) multi-socket or a grounded power outlet.
- The monitor may flicker when turned on in an area of low temperature. This is normal.
- Sometimes red, green or blue spots may appear on the screen. This is normal.

### DisplayPort connection

Connect your PC to the monitor using the DisplayPort cable as shown here.

Press the menu button and then select the input option from the input menu.

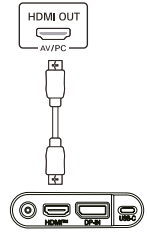


#### Note:

The use of a Mini-DisplayPort to DisplayPort Adapter may be required depending on available PC outputs.

### HDMI connection

Connect your PC to the Monitor using HDMI cable(not provided) as shown here. Press Menu button and then select the input option From input menu.

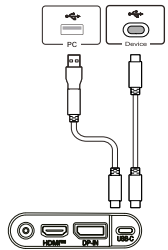


#### Caution:

Use a certified cable with the HDMI logo attached, if you do not use a certified HDMI cable, the screen may not display or a connection error may occur.

### USB-C connection

Connect your PC to the Monitor using USB-C cable(not provided) as shown here. Press Menu button and then select the input option From input menu.

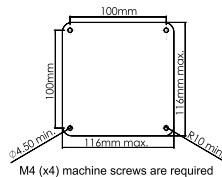


#### Note:

- USB-C port is not for the monitor power source but for USB device power with 15W PD out.
- USB-C port does not have USB data transmission capability.

## When mounting without a stand

### Monitor mounting plate details.



## Specifications

### Model number – BFP300-24

Display	Screen type	24" class (23.8 V diagonal) TFT (Thin Film Transistor) LCD (Liquid Crystal Display) Screen. Diagonal length of the screen: 60.45 cm	
	Pixel pitch	0.2058 mm x 0.2058 mm	
	Brightness (typ)	300ccd/m2	
	Contrast (typ)	1000	
Resolution	Maximum resolution	2560 x 1440 @ 75 Hz	
	Recommended resolution	2560 x 1440 @ 60 Hz	
Video signal	Horizontal frequency	30 kHz to 135 kHz	
	Vertical frequency	48 Hz to 75 Hz	
	Synchronization	Separate sync	
Input connector	HDMI, DisplayPort, USB-C		
Power	Voltage	19 V	
	Power consumption (typ.)	22 W	
Dimension (WxHxD)	Monitor size (width x height x depth)		
	540 mm x 322 mm x 42.5 mm		
Weight	3.6 kg		
AC/DC adapter	ADS-120QL-19A-3 190110E, manufactured by Shenzhen Honor Electronic Co., Ltd. Output: 19.0 V $\overline{\text{---}}$ 5.79 A		
Environmental conditions	Operating condition	Temperature: 0°C to 40°C; Humidity: Less than 80%	
	Storing condition	Temperature: -20°C to 60°C; Humidity: Less than 85%	

## Power indicator

Mode	On mode	Power-saving	Off mode
LED color	Green	Blinking green	Off



For additional support scan the QR code  
or visit <https://service.blpprofessional.com/CONTACT>

## FCC compliance statement

This equipment has been tested and found to comply within the limits of a Class B digital device pursuant to Part 15 of the FCC Rules. These limits are designed to provide reasonable protection against harmful interference in a residential installation.

This equipment generates, uses, and can radiate radio frequency energy and if not installed and used in accordance with the instructions, may cause harmful interference to radio communications. However, there is no guarantee that interference will not occur in a particular installation.

If this equipment does cause harmful interference to radio or television reception (which can be determined by turning the equipment on and off), the user is encouraged to try to correct the interference by using one or more of the following measures:

- Reorient or relocate the receiving antenna.
- Increase the separation between the equipment and the receiver.
- Connect the equipment into an outlet on a circuit different from that to which the receiver is connected.
- Consult the dealer or an experienced radio/TV technician for help.

**Caution:** Changes or modifications not expressly approved by the party responsible for compliance could void the user's (or your) authority to operate the equipment. Only peripherals (digital input/output devices, terminals, printers, etc) certified to comply with the Class B limits may be attached to this product. Operation with non-certified peripherals is likely to result in interference to radio and TV reception. Only shielded signal cables may be used with this system.

CAN ICES-3 (B)/NMB-3(B)



VCCI (for Japan)

この製品は、クラスB情報伝送機器です。この製品は、家庭環境で使用することを目的としていますが、この装置がラジオやテレビジョン受信機に近接して使用される場合、受信機障害を引き起こすことがあります。取扱説明書に従って正しい取り扱いをしてください。



\*Applicable on FTE (Information VCCI-B)

## For additional information, please visit [bloombergprofessional.com/hardware](https://www.bloombergprofessional.com/hardware).

The data included in these materials are for illustrative purposes only. The BLOOMBERG PROFESSIONAL® service, BLOOMBERG Data and Bloomberg Industries (the "Services") are owned and distributed by Bloomberg Finance L.P. ("BFLP") in all jurisdictions other than Argentina, Bermuda, China, India, Japan and Korea (the "BLP Countries"). BFLP is a wholly owned subsidiary of Bloomberg L.P. ("BLP"). BLP provides BFLP with global marketing and operational support and service for the Services and distributes the Services either directly or through a non-BFLP subsidiary in the BLP Countries. Certain functionalities distributed via the Services are available only to sophisticated institutional investors and only where the necessary legal clearance has been obtained. BFLP, BLP and their affiliates do not guarantee the accuracy of prices or information in the Services. Nothing in the Services shall constitute or be construed as an offering of financial instruments by BFLP, BLP or their affiliates, or as investment advice or recommendations by BFLP, BLP or their affiliates of an investment strategy or whether or not to "buy", "sell" or "hold" an investment. Information available via the Services should not be considered as information sufficient upon which to base an investment decision. BLOOMBERG, BLOOMBERG PROFESSIONAL, BLOOMBERG MARKETS, BLOOMBERG NEWS, BLOOMBERG ANYWHERE, BLOOMBERG TRADEBOOK, BLOOMBERG TELEVISION, BLOOMBERG RADIO, BLOOMBERG PRESS and BLOOMBERG.COM are trademarks and service marks of BFLP, a Delaware limited partnership, or its subsidiaries. ©2024 Bloomberg Finance L.P. All rights reserved. 900322 0824